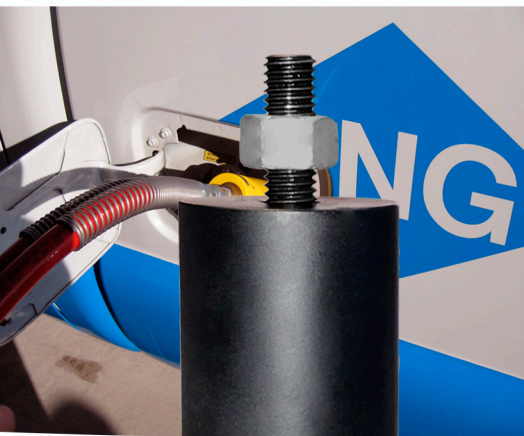


CNG - Product line brochure





CNG - NGV Fuelling Nozzles

NGV1 Series

- Valve design ANSI/CSA/NGV1 standards
- Push-Pull actuation
- Work pressure: 200 BAR (3000 PSI) - 250 BAR (3600 PSI)
- Temperature range -40 °C to +85 °C (-40 °F to +185 °F)
- Integrated shut-off valve
- Plastic thermal protection

NZ Series

We manufacture NZ nozzles in different diameters, according to the regulations and standards of each country.

- Material: AISI 304 / 316 Stainless Steel.
- Consult in our factory for the required model*

NGV1-NZ Adaptor receptacles

- Material: AISI 304 / 316 Stainless Steel.

Trunnion ball valves - Three way - High pressure

14N3 Series

- Instrumentation - General services - Installations and gas dispensers
- Work pressure: ANSI Class 1500 & 2500 | up to 414 bar (6000 psi)
- Temperature range -40 °C to +232 °C (-40 °F to +450 °F)
- Size range: 1/4"
- Forged stainless steel ASTM A182-F304
- Threaded ends NPTH ANSI B1.20.1
- Seats Delrin® / Peek / HPV Peek / GF30% Peek
- Wear compensation by spring washers
- Hand operated 180° turn

- Silencers with bronze sintered filter and repair kits



Fuel line breakaways

Breakaway valves provides an important safety feature for CNG dispensing systems. It allows the hose to safely disconnect, preventing damage to the dispenser in the event of "drive off," sealing the CNG in the line to prevent leakage and hose whip.

- Work pressure: up to 250 bar (3600 psi)

Brass Series

- Size range: 1/4" Threaded ends NPTH ANSI B1.20.1
- Exclusive design
- Compact size

Stainless Steel Series

- Improved construction
- Superior flow characteristics
- No additional tool necessary

Vent line breakaway

- Size range: 1/8" Threaded ends NPTH ANSI B1.20.1



Two way integral panel mount ball valves - High pressure

71 Series

- Instrumentation - General services - Installations and gas dispensers
- Work pressure: ANSI Class 1500 & 2500 | up to 414 bar (6000 psi)
- Temperature range -40 °C to +232 °C (-40 °F to +450 °F)
- Size range: 1/4" & 1/2"
- Stainless steel ASTM A351 CF8M
- Threaded ends NPTH ANSI B1.20.1
- Seats Delrin® / Peek / HPV Peek / GF30% Peek
- Hand operated
- Available materials to customer specification





High pressure solenoid valves - Pilot operated 2/2 Series

- Normally closed.
- Bore: 9.0mm
- Rugged brass or stainless steel valve with piston design built to withstand pressure ratings over 345 bar (5000 psi)
- High flow design for fast CNG dispensing, reduces vehicle fill time
- Ambient temperature range -40°F to 158°F (-40°C to 70°C)
- Delrin® or Peek seat provides tight sealing and durable operation
- Piston: Stainless Steel
- Size range: 1/4" to 1/2" Threaded ends NPT-H
- Standard Voltages 24V/50-60Hz - 220V/50-60Hz
- AISI 430FR Stainless Steel Core
- Coil with explosion-proof case
- Mountable in any position, coil upwards preferably

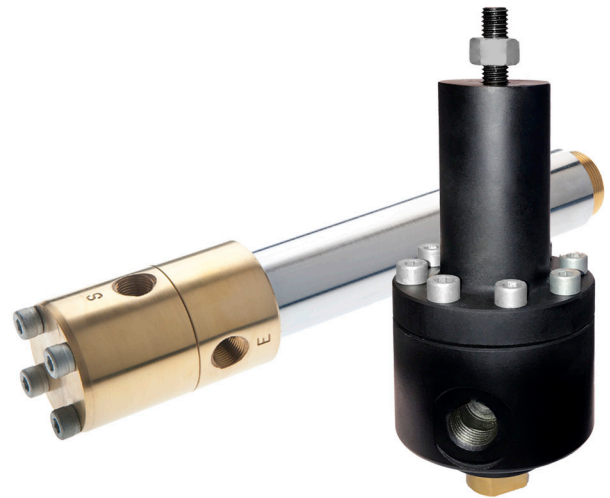
Pressure regulators for CNG dispensers

RS15 Series

- Balanced poppet design
- Piston sensing and hard seat seal
- Maximum Inlet Pressure: 345 bar (5000 psi)
- Outlet Pressure Control Range: 0 to 250 bar (0 to 3625 psig)
- Bore: 10mm
- Body: SAE1045 Carbon Steel
- Seat: Peek

BR15 Series

- Maximum Inlet Pressure: 345 bar (5000 psi)
- Outlet Pressure Control Range: 0 to 250 bar (0 to 3625 psig)
- Bore: 9.5mm
- Body: Brass
- Seals: NBR 90



Check, Excess flow and Filter valves for CNG dispensers

BR Check and Excess flow valves

- Size range: 1/4" Threaded ends NPT-H
- Closing mechanism: Poppet - Piston shutter
- Body, end and shutter: Brass
- Seals: NBR 90
- Maximum Inlet Pressure: 345 bar (5000 psi)
- Mountable in any position

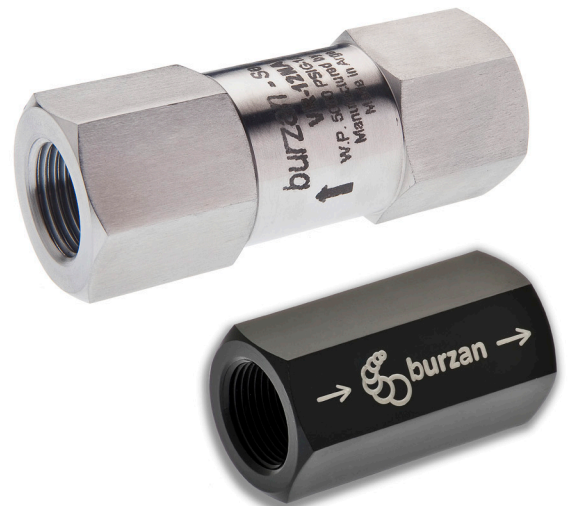
BR Filter

- Size range: 1/4" Threaded ends NPT-H
- Body, end and filter element: Brass
- Seals: NBR 90 and Teflon
- Maximum Inlet Pressure: 345 bar (5000 psi)
- Filter element: Brass mesh
- Mountable in any position

Check and Excess flow valves - Line mount

VR4 & VEXCF Series

- Instrumentation - General services - Installations and gas dispensers
- Closing mechanism: Poppet - Piston shutter
- Work pressure up to 5000 PSI
- Temperature range -20 °C to +220 °C (-4 °F to +428 °F)
- Stainless steel AISI 304 / AISI 316 - Carbon steel SAE 1045
- Threaded ends NPTH ANSI B1.20.1
- Seats PTFE - Viton® - Polypropylene - Metallic
- Resilient, custom molded, blow-out resistant seat design
- Resistant to impacts caused by pressure
- Designed to operate at high temperatures.
- Special design and materials for working conditions to customer specification
- Check valves 100% factory tested, approved with zero leak





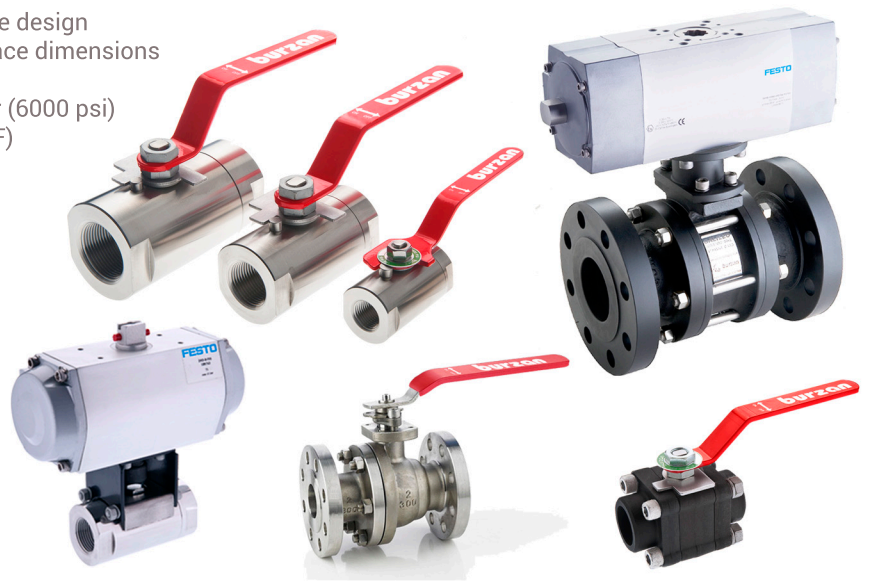
Valves for CNG compressor lubrication circuit 3780 Series

- Closing mechanism: Poppet - Piston shutter
- Size range: 1/8" to 1/4" Threaded ends NPT-H / NPS
- Work pressure up to 7500 PSI
- Temperature range -40 °C to +70 °C (-4 °F to +158 °F)
- Stainless steel AISI 304 / AISI 316 Body
- Seal mechanism: NBR 90 O'ring
- Special design and materials for working conditions to customer specification
- Check valves 100% factory tested, approved with zero leak

Ball Valves and Valve automation

As a valve manufacturer for the entire industry, Burzan has exclusive ball valve models and actuators for the CNG market.

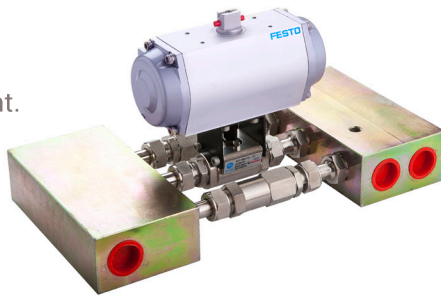
- Valve design API 6D / ASME B16.34 / API 607 Fire safe design
- ASME 16.5 Flange dimensions / ASME 16.10 Face to face dimensions
- Testing procedures API 598
- Work pressure: ANSI Class 150 to 2500 | up to 414 bar (6000 psi)
- Temperature range -40 °C to +232 °C (-40 °F to +450 °F)
- Size range: 1/4" to 4"
- Stainless Steel, Carbon Steel and Brass bodies
- Ends: NPTF - BSPTF - BW - SW (As standard)
- Flanged ends: ANSI 150 / 300 / 600
- Standard and Full bore
- Seats Teflon / GF Teflon / CF Teflon / UHMW Delrin® / Peek / HPV Peek / GF30% Peek / PCTFE
- Blowout proof stem
- Fire safe and antistatic design
- Hand operated - pneumatic or electric actuated
- Sanitary polished and lock device as optional
- Available materials to customer specification



Customized special valves

We develop and manufacture products for the unique needs of each client

Natural gas priority panel (5000 PSI). Multivalve set with regulable racor mount. (adjustable connectors) Eliminates large percentage piping required in conventional installations.



Wide stock of spare parts and supplies for compressors and CNG dispensers



Manufacture of special valves

Trunnion ball valves 3, 5 and 7 way. Fully in stainless steel, for 5000 PSI work pressure. Hand operated and actuated.



Pressure regulators and electrovalves for high pressure gas installations



Valves with special ends





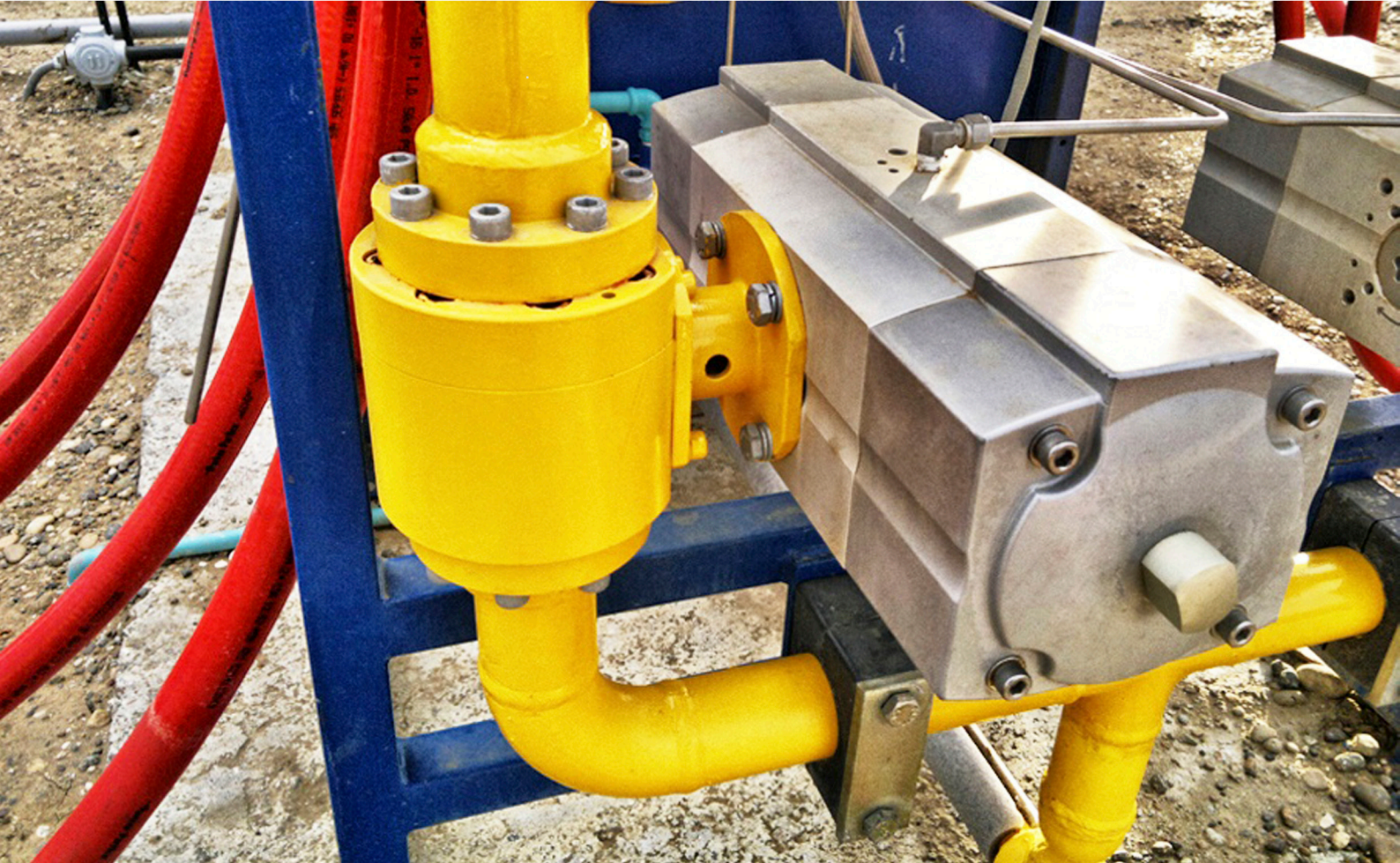
Upstream



Midstream



Downstream



To learn more, contact us

Mármol 312 Quilmes (1878)
Buenos Aires - Argentina



+54 11 4257 3200
+54 11 4224 3241



info@burzanhnos.com
burzanhnos.com

